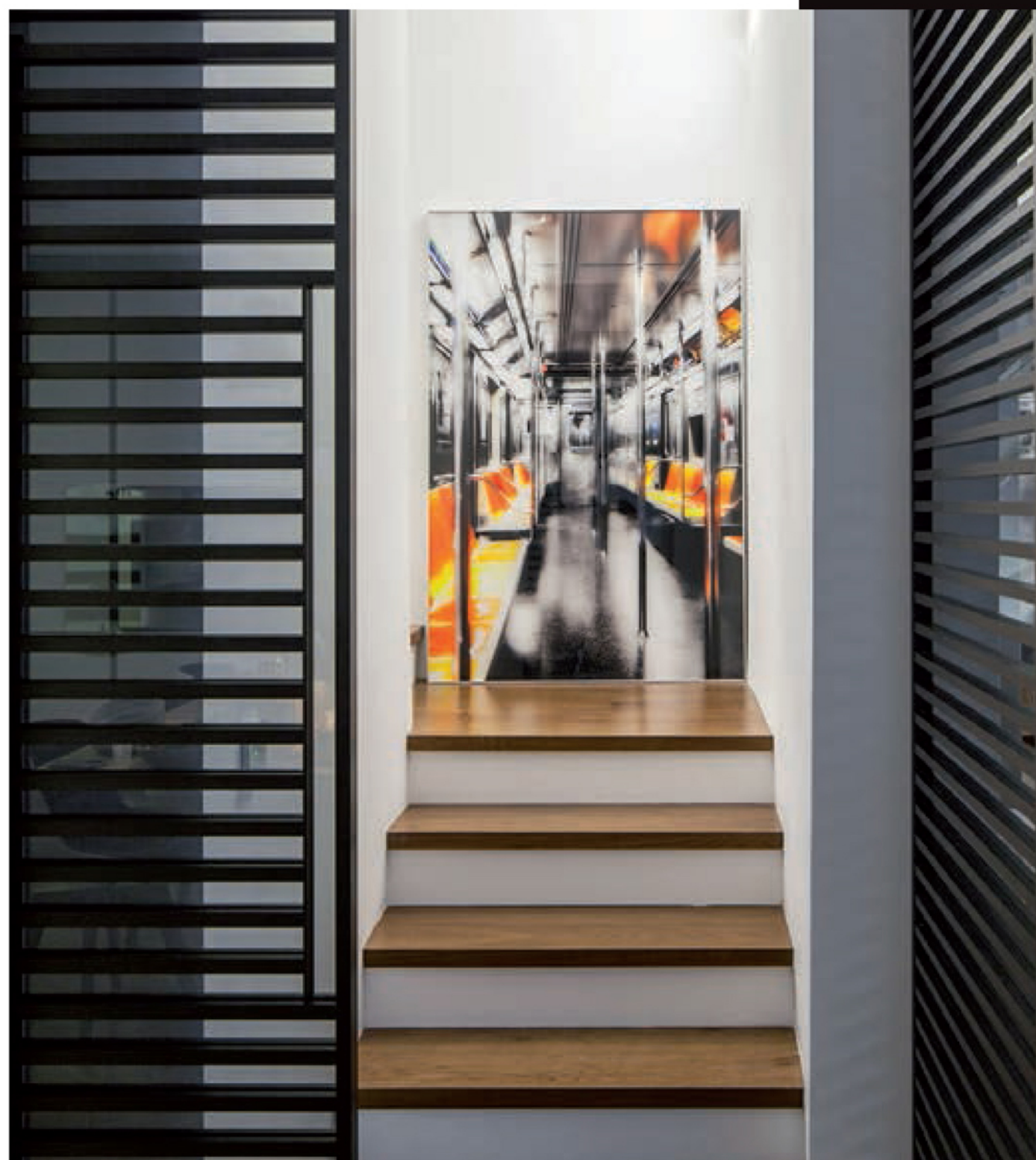


The house was planned for a couple holding senior positions, who decided to move their offices to their home so as to be with their young children throughout the day. A central feature of the living room, located above the fireplace, is a bookcase, its shelves positioned at unusual angles. The geometric bookcase is made of aluminum and is fused as a single unit in order to avoid the complex connections that would be generated as a result of the angled shelves. The scale of monochromatic colors that was chosen for the house is tempered only with light touches of color. It is the content of the bookcase in the living room that creates the main splash of color in the space. The bedrooms are located on the second floor. The parents' suite is divided into two areas, a chest of drawers that also serves as the back of the bed separating the sleeping area from the closet area.

The master bathroom is located at the end of the corridor created between the bedroom closets and covered entirely in gray stone – the floor, walls, and a sink surface with two sinks are also built from the same stone. The use of one kind of material as covering, surface, sinks and bench generates a calm and pleasant environment for the user. The architects created a restrained, modern space, free of excessive ornamentation. The materials and the textures that were chosen have contrasts that produce a slight tension between the elegant and the industrial. Yet despite the broad range of materials, there exists a harmony generated by the use of a limited number of hues and rich textures. The possibility of sliding dividers to separate private and public areas enables a multitude of spatial scenarios. The passage of light, air and movement is changed with each new configuration as dividers are opened and closed.

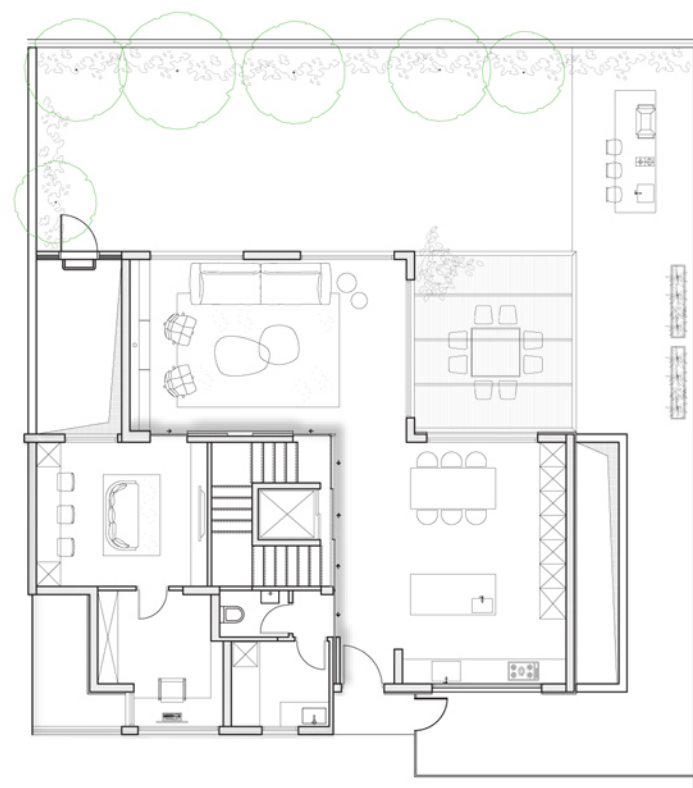


B HOUSE RAMAT HASHARON

Ramat Hasharon, Israel



The discreet colors as well as the geometrical shapes of the furniture lend an elegant and sophisticated touch to the space.



A system of glass and aluminum partitions envelopes the nucleus and heart of the house and allows control over the movements between the floors.





Project: B house Ramat Hasharon. Designer: Tal Goldsmith Fish Design Studio. Location: Ramat Hasharon, Israel. Year of completion: 2015. Size: 300 sqm. Photos: Amit Geron.

